

# UNIGUARD UG-2-J-LON

Ionisated smoke detector LONWORKS for ventilation ducts

CE 6.0.2.1.E-P



- One-tube air sampling system
- Service alarm
- Test hole on cover
- Simple installation
- Sensitive flow indication
- Filter for dusty environments
- Simple service and maintainance
- Installer-friendly connection of cables
- Foolproof moutage of sampling tube
- "Plug-in" moutage of optional booster fan

## TEKNICAL DATA:

Detector:	Ionisated detector UG-2-J-LON
Neuron:	3120 10MHz
Tranciever:	LPT-10 78kb/s
Power supply:	
Detector:	From the LonWorks bus
Booster fan:	24VAC separate supply
Normal current:	max 6mA ~ 50mA - Booster fan
Ambient air temperature:	-10°C to +50°C
Max. humidity:	99% rH
Service Alarm:	Indication by red LED
Fire alarm:	Indication by red LED
Adaptor and cover:	ABS
Venturi pipe:	Aluminium length 600mm Cut out hole ø35 mm

## FUNCTION:

Uniguard has been developed to detect smoke in ventilation ducts and combines a smoke detector and an adaptor system where both tube and housing are specially designed for optimum airflow through the smoke detector.

The system fulfils all the requirements for safe fire detection with airflow speeds from 0,2 m/s to 20 m/s.

Uniguard is used to control fire-safety flaps, to stop ventilation fans, and to activate accoustic and optical alarms etc.

The detector has a bayonet fitting to simplify moutage and removal. The ST-I-LON detector is connected direct onto the LonWork bus. It gets it's power from the bus (LPT-10). It is compatible with FTT-10 and can thereby be connected in free topology of Lon Works to any computer central.

## ACCESSORIES:

Booster fan:	M-UG 1
Filter:	FI-UG/10 pack
Tubes:	Venturi pipe L= 1,5 m (ducts 0,8-1,3 m) Venturi pipe L= 2,8 m (ducts larger than 1,3 m)
Mounting bracket:	UG-BESLAG (for insulated/circular ducts)
Waterproof housing:	UG-SH for outdoors, in cold attics etc. IP65.
Sign:	"Hidden detector"
Detector module:	ST-I-LON

## BASIC PRINCIPLES FOR POSITIONING:

For the airflow through the adaptor to be representative of the airflow in the ventilation duct, install the detector at a place where normally flow meters etc. should be mounted, please see our installation instructions.

Or use the national or local rules for moutage according to "Methods for measuring airflow in ventilation systems".

# UNIGUARD UG-2-J-LON

Ionisated smoke detector LONWORKS for ventilation ducts

# 6.0.2.1.E-P

## INSTALLATION:

The tube is made of aluminium and can easily be shortened to suit the diameter of the duct. Hole diameter is  $\varnothing$  35 mm. With insulated or circular ducts - use the mounting bracket, hole diameter is then  $\varnothing$  48 mm.

## MAINTAINANCE:

When the detector becomes contaminated, sensitivity is increased, triggering the service alarm. This can be avoided for a considerable time by cleaning the detector once a year with a vacuum cleaner.

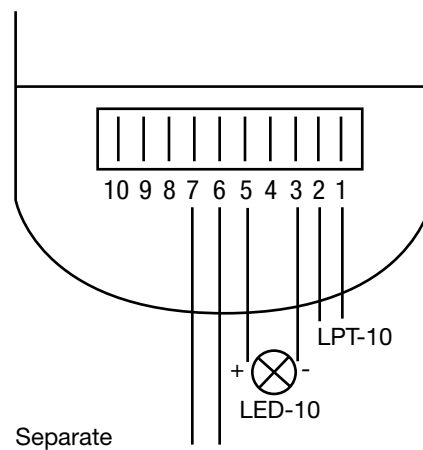
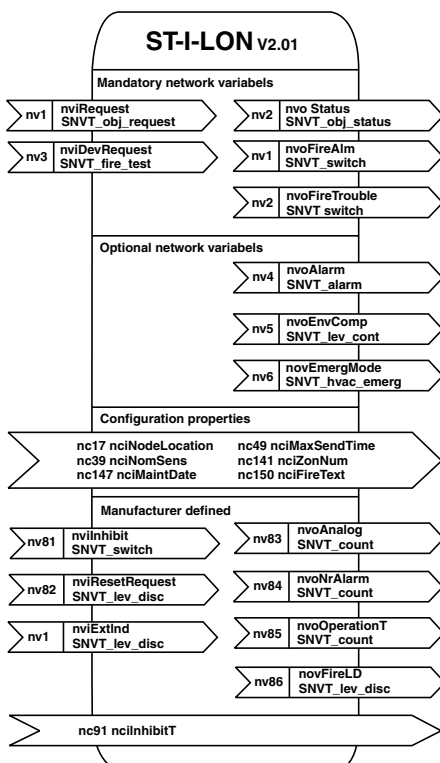
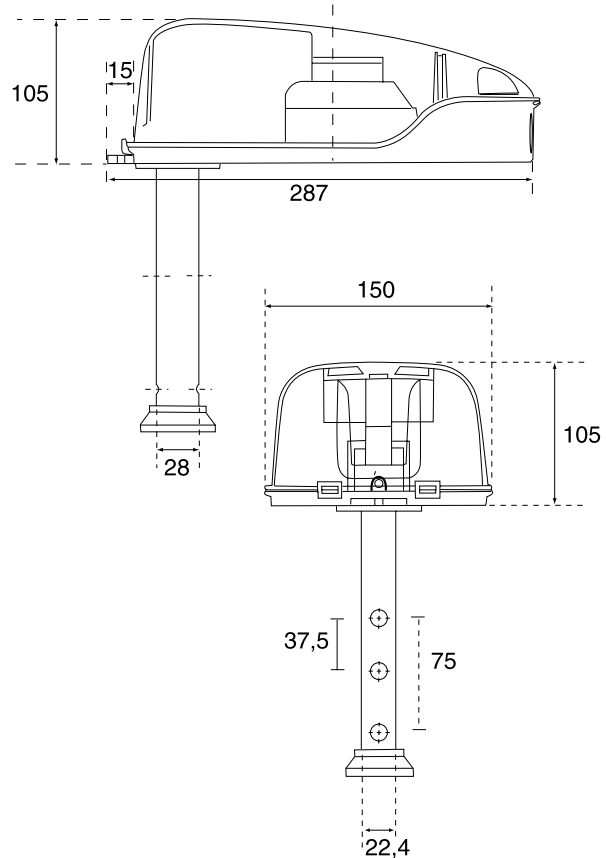
## CHECKING AIR FLOW:

The detector is equipped with a flow indicator which oscillates in the air stream when the detector is correctly installed. This gives simple confirmation that there is no leakage, and that air from the ventilation duct is flowing through the detector.

## FUNCTION TEST:

When installation is complete, the detector should be tested. This can be carried out with smoke or suitable tests spray for example RDP-300 (from Calectro), use the test hole on cover. Do not forget to refit the plastic plug after test.

**NB:** When installing outdoors or in cold attics etc., where there is a risk for condensation, this requires that the detector is insulated from the surrounding air by means of for example our waterproof housing UG-SH, and marked with an extra indicator lamp, LED-01 and a sign marked "Hidden Detector".



Separate supply to booster fan.