

ANALOGUE, ADDRESSABLE, OPTICAL SMOKE DETECTOR NS-AOS

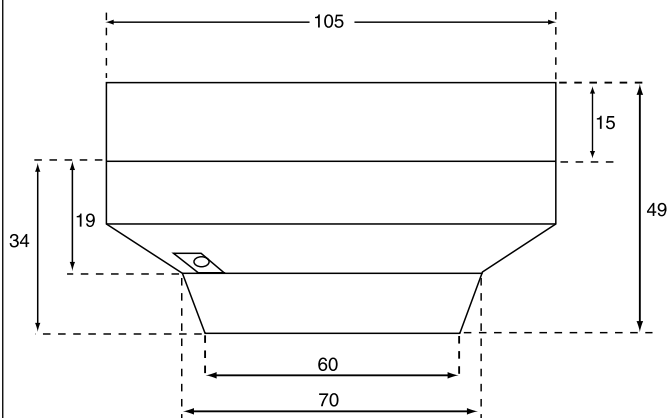
CE 6.4.2.3.E-P



SPECIFICATION:

Detector module:	White PC with metal net around the chamber
Base:	White PC
Operating Voltage:	15-35 VDC
Operating Current:	0,2 mA
Alarm Current:	ca 2,5 mA
Operating temperature:	-25°C to +70°C
Max. humidity:	0-100%rF
Sensitivity:	According to EN-54-7
Tests according to EN-54:	Delta (Denmark)
Weight:	ca 180 g
Smoke Alarm:	Indicated by red LED
Output to external LED:	Max 2 mA

DIMENSIONS:



- Addressable, at alarm the detector number is shown on the display
- More reliable alarm
- Intelligent control of contamination
- Strong immunity to air velocities, insects and EMC interference

GENERAL INFORMATION:

The NS-AOS is utilising the light scatter sensing principle, the light source is pulsed to maintain a low monitoring current.

The detector chamber contains a light emitting diode and a receiver.

In normal operation the light from the emitting diode does not reach the receiver, because of a light absorbing labyrinth. When smoke particles are entering the chamber, the light from the emitting diode is reflected to the receiver and alarm is obtained.

The detector contains an intelligent controlling circuit. This circuit is adjusting the sensitivity to give an optimal function during the whole life time of the detector.

When the controlling circuit can no longer compensate for contamination, a service alarm is indicated.

The NS-AOS contains a micro controller. The address is set by means of a DIL-switch. The DIL-switch allows 32 addresses to be set.

When the LED indicator on the detector is lit, it is confirmed that the alarm has been received by the control panel. The communication safety is guaranteed by a so called FSK communication with collision detect and data checking. This loop of communication is unaffected by electric interference to such a degree that standard cable can be used. The reliable operation of the detector and its high sensitivity for smoke particles makes the detector suitable to supervise and protect all areas where a high degree of protection is required, like libraries, archives, computer installations, storage of goods, hotels, offices etc.

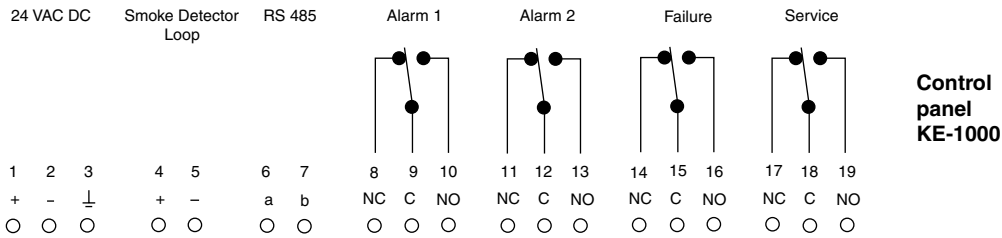
The detector is available in three versions:

- 1) Standard for normal rooms
- 2) For ventilation duct application
- 3) For tough industrial environments, with base IP-55

ANALOGUE, ADDRESSABLE, OPTICAL SMOKE DETECTOR NS-AOS

6.4.2.3.E-P

WIRING DIAGRAM:



The relay contacts are shown in volt free position.
Relay output max: 250VAC/8A

